

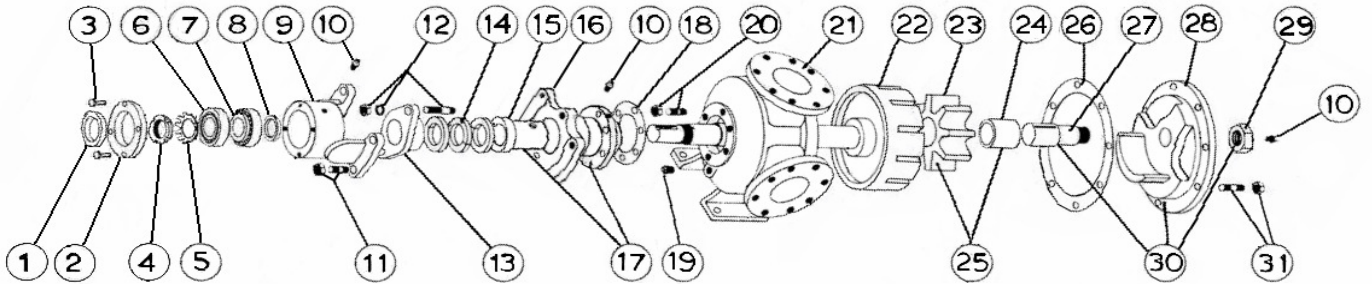
VICAN HEAVY DUTY UNMOUNTED PUMP

BULLETIN: EVD-R332P-C
 PAGE: 1
 EFFECTIVE: B. 06/09/2007

MODEL R-332 with Packing

Subject to change without notice
 F.O.B. Factory

Supersedes all previous parts lists



ITEM	DESCRIPTION	MATERIAL	PART NUMBER	QTY	PRICE
1	Outer Lip Seal	Buna	195-00-400-120	1	
2	Bearing Cap	Iron	180-02-200-010	1	
3	Bearing Cap Fasteners	1/2-13x1 1/4 Hex Cap Screw Grade 5	355-00-123-670	6	
4	Locknut	Steel - Locknut N13	355-00-562-605	1	
5	Lockwasher	Steel - Lockwasher W13	355-00-554-605	1	
6	Ball Bearing Cup	Steel - 66461	150-00-325-605	2	
7	Ball Bearing Cone	Steel - 66225	150-00-350-605	2	
8	Inner Lip Seal	Buna	195-00-400-120	1	
9	Bearing Housing	Iron	140-02-300-310	1	
10	Grease Fitting	Steel - 1/8 NPT Straight Grease Fitting	325-00-025-605	3	
11	Bearing Housing Fasteners	3/4-10x2 3/4 T1 N1 Stud	355-00-466-320	4	
		3-4-10 Heavy Hex Nut	355-00-609-660	4	
12	Packing Gland Fasteners	3/4-10x5 T1 N3 - Stud	355-00-469-620	2	
		3/4 Lockwasher	355-00-544-660	2	
		3/4-10 Heavy Nut	355-00-609-660	2	
13	Packing Gland	Iron	370-02-230-310	1	
14	Packing Set	Standard - Up To 500 Deg F - C1065	365-00-900-780	1	
		Food Grade - Not Certified - C1045	365-00-900-750	1	
		High Temperature - 1625GF	365-00-900-280	1	
15	RBS Bushing	Bronze	175-02-290-050	1	
		Carbon	175-02-290-140	1	
16	Rotor Bearing Sleeve (RBS)	Iron	445-02-335-310	1	
17	RBS and Bushing Assembly	Iron / Bronze	450-03-335-330	1	
18	RBS Gaskets	Standard	245-00-130-240	1	
19	RBS Fasteners	5/8-11x2 1/4 T3/4 N1 1/8 Stud	355-00-455-620	6	
		5/8-11 Heavy Hex Nut	355-00-601-660	6	
20	Pipe Plug	1/4-18 Hex Head Plug	390-00-125-605	3	
21	Casing	Iron	190-02-955-310	1	
22	Rotor and Shaft Ass'y	Ductalloy / Steel	455-03-780-139	1	
23	Idler	Iron	280-02-380-310	1	
24	Idler Bushing	Bronze	175-02-300-050	1	
		Carbon	175-02-300-140	1	
25	Idler and Bushing ass'y	Iron / Bronze	285-03-380-330	1	
		Iron / Carbon	285-03-380-332	1	
26	Head Gasket	Standard	2-315-002-806-15	3	
27	Idler Pin	Steel - Greasable	295-00-270-690	1	
28	Head	Iron - Relief Valve	265-02-600-310	1	
29	Idler Pin Nut	Steel	355-00-635-660	1	
30	Head and Idler Pin Ass'y	Iron - Relief Valve / Steel - Greasable	270-03-600-350	1	
32	Head Fasteners	3/4-10x2 3/4 T1 N1 Stud	355-00-466-620	12	
		3/4-10 Heavy Nut	355-00-609-660	12	
31	Pedestal - Not Shown	Iron	375-02-100-310	1	