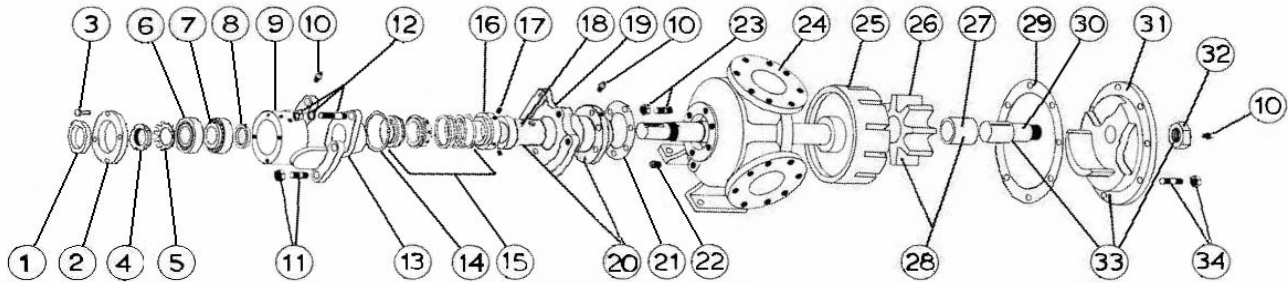


**MODEL N-260 with Mechanical Seal**

Subject to change without notice  
 F.O.B. Factory  
 Supercedes all previous parts lists



ITEM	DESCRIPTION	MATERIAL	PART NUMBER	QTY	PRICE
1	Outer Lip Seal	Buna	195-00-300-120	1	
2	Bearing Cap	Iron	180-02-200-010	1	
3	Bearing Cap Fasteners	Steel - 1/2-13x1 1/4 Hex Cap Screw Grade 5	355-00-123-670	4	
4	Locknut	Steel - Locknut N13	355-00-562-605	1	
5	Lockwasher	Steel - Lockwasher W13	355-00-554-605	1	
6	Ball Bearing Cup	Steel - 66461	150-00-325-605	2	
7	Ball Bearing Cone	Steel - 66225	150-00-350-605	2	
8	Inner Lip Seal	Buna	195-00-400-120	1	
9	Bearing Housing	Iron	140-02-300-310	1	
10	Grease Fitting	Steel - 1/8 NPT Straight Grease Fitting	325-00-025-605	3	
11	Bearing Housing Fasteners	3/4-10x2 3/4 T1 N1 Stud	355-00-466-620	4	
12	Seal Seat Retainer Fasteners	3/4-10x2 3/4 T1 N1 Stud	355-00-466-620	2	
		3/4 Lockwasher	355-00-544-660	2	
		3/4-10 Heavy Hex Nut	355-00-609-660	2	
15	Mechanical Seal Ass'y	Buna / Carbon vs Ni-Resist / SS - BF171	335-00-300-011	1	
		Viton / Carbon vs Ni-Resist / SS - XP171	335-00-300-020	1	
		Viton / Carbon vs Ceramic / SS - XP1C1	335-00-300-019	1	
17	Set Screws	1/4-20x1/4 Cup Point Socket	355-00-271-660	2	
18	RBS Bushing	Nitralloy	175-02-290-400	1	
19	Rotor Bearing Sleeve (RBS)	Iron - Non-Jacketed - For Buna or Viton Seal	445-02-350-310	1	
		Iron - Jacketed - For Buna or Viton Seal	445-02-575-310	1	
20	RBS and Bushing Assembly	Iron / Bronze - Non-Jacketed - For Buna or Viton Seal	450-03-340-330	1	
		Iron / Bronze - Jacketed - For Buna or Viton Seal	450-03-575-330	1	
21	RBS Gaskets	Standard	245-00-130-240	1	
22	RBS Fasteners	5/8-11x2 1/4 T3/4 N1/8 Stud	355-00-455-620	4	
23	Pipe Plug	1/4-18 Hex Head Plug	390-00-125-605	3	
24	Casing	Iron - Jacketed	190-02-915-310	1	
25	Rotor and Shaft Ass'y	Ductalloy / Steel	455-03-760-139	1	
26	Idler	Iron	2-423-200-100-70	1	
27	Idler Bushing	Bronze	2-129-008-454-05	1	
		Carbon	2-129-028-880-05	1	
28	Idler and Bushing Ass'y	Iron / Bronze	285-03-360-045	1	
		Iron / Carbon	285-03-360-047	1	
29	Head Gasket	Standard	2-314-004-806-15	2	
30	Idler Pin	Steel - Greasable	295-00-250-690	1	
		Steel - Non-Greasable	295-00-260-690	1	
31	Head	Iron - Relief Valve - Non-Jacketed	265-02-580-310	1	
		Iron - Plain Head - Jacketed	265-02-590-310	1	
32	Idler Pin Nut	Steel	355-00-625-660	1	
33	Head and Idler Pin Ass'y	Iron - Relief Valve / Steel - Greasable - Non-Jacketed	270-03-585-350	1	
		Iron - Relief Valve / Steel - Non-Greasable - Non-Jacketed	270-03-580-350	1	
		Iron - Plain Head / Steel - Greasable - Jacketed	270-03-591-350	1	
		Iron - Plain Head / Steel - Non-Greasable - Jacketed	270-03-590-350	1	
34	Head Fasteners	5/8-11x2 1/2 T3/4 N1 1/8 Stud	355-00-458-620	8	
		5/8-11 Heavy Hex Nut	355-00-601-660	8	
35	Pedestal - Not Shown	Iron	375-02-100-310	1	