

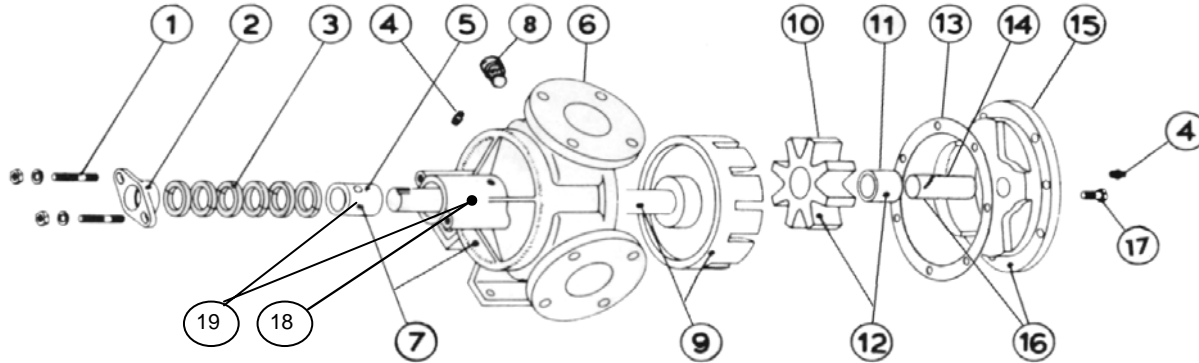
VICAN GENERAL PURPOSE JACKETED UNMOUNTED PUMP

BULLETIN: EVD-LQ230P-C
 PAGE: 1
 EFFECTIVE: A. 25/08/2004

MODEL LQ-230 with Packing

Subject to change without notice
 F.O.B. Factory

Supercedes all previous parts lists



ITEM	DESCRIPTION	MATERIAL	PART NUMBER	QTY	PRICE
1	Packing Gland Fasteners	7/16-14x2 1/2 T5/8 N1 3/8 Stud	355-00-436-620	2	
		7/16 Flat Washer	355-00-499-660	2	
		7/16 Lock Washer	355-00-535-660	2	
		7/16-14 Heavy Hex Nut	355-00-588-660	2	
2	Packing Gland	Iron	370-02-090-310	1	
3	Packing Set	Standard - Up To 500 Deg F - C1065	365-00-550-780	1	
		High Temperature - 1625GF	365-00-550-280	1	
4	Grease Fitting	Steel - 1/8 NPT Straight Grease Fitting	325-00-025-605	2	
5	Casing Bushing	Bronze	175-02-200-050	1	
		Carbon	2-116-017-880-00	1	
6	Casing	Iron - Jacketed - For Non-Jacketed RBS	190-02-750-310	1	
		Iron - Jacketed - For Jacketed RBS	190-02-762-310	1	
7	Casing and Bushing Ass'y	Iron / Bronze - For Non-Jacketed RBS	Consult Factory	1	
		Iron / Carbon - For Non-Jacketed RBS	Consult Factory	1	
8	Pipe Plug	1/4-18 Hex Head Pipe Plug	390-00-125-605	2	
9	Rotor and Shaft Ass'y	Iron / Steel	455-03-540-349	1	
		Ductalloy / Steel	455-03-540-139	1	
10	Idler	Iron	280-02-260-310	1	
11	Idler Bushing	Bronze	2-116-008-454-04	1	
		Carbon	2-116-017-880-04	1	
12	Idler and Bushing ass'y	Iron / Bronze	285-03-260-330	1	
		Iron / Carbon	285-03-260-332	1	
13	Head Gasket	Standard	245-00-060-240	2	
14	Idler Pin	Steel - Greasable	2-436-006-291-00	1	
		Steel Non-greasable	295-00-180-690	1	
15	Head	Iron - Plain	265-02-400-310	1	
		Iron - Relief Valve	265-02-410-310	1	
16	Head and Idler Pin Ass'y	Iron - Plain - Non-Jacketed / Steel - Greasable	270-03-400-350	1	
		Iron - Plain - Jacketed / Steel - Greasable	270-03-430-350	1	
		Iron - Relief Valve / Steel - Greasable	270-03-410-350	1	
		Iron - Plain - Non Jacketed / Steel - Non-greasable	270-03-405-350	1	
		Iron - Plain - Jacketed / Steel - Non-Greasable	270-03-435-350	1	
		Iron - Relief Valve / Steel - Non-greasable	270-03-415-350	1	
17	Head Bolts	7/16-14x1 Hex Cap Screw	355-00-085-670	7	
18	Rotor Bearing Sleeve	Iron - Jacketed	445-02-030-310	1	
19	Rotor Bearing Sleeve and Bushing A'ssy	Iron - Jacketed / Bronze	450-03-030-330	1	
		Iron - Jacketed / Carbon	450-03-030-332	1	