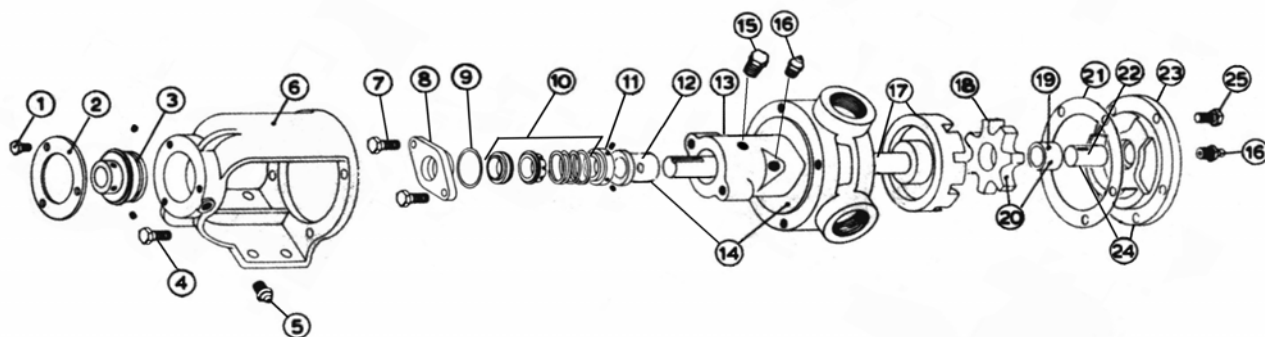


**MODEL H-115SD with Mechanical Seal**

Subject to change without notice  
 F.O.B. Factory

Supercedes all previous parts lists



ITEM	DESCRIPTION	MATERIAL	PART NUMBER	QTY	PRICE
1	Bearing Retainer Bolts	1/4-28X5/8 Hex Cap Screw GR5	355-00-006-670	4	
2	Bearing Retainer	Alluminum	145-02-050-010	1	
3	Ball Bearing	Steel	150-00-125-605	1	
4	Bracket Bolt	5/16-18X3/4 Hex Cap Screw GR5	355-00-035-670	4	
5	Grease Fitting	1/8 NPT Straight Grease Fitting	325-00-025-605	1	
6	Bracket	Iron	165-02-005-310	1	
7	Seal Seat Retainer Fasteners	Steel - Hex Head Cap Screw 5/16" Lock washer	355-00-050-670 355-00-529-660	2 2	
8	Seal Seat Retainer	Iron Iron - Teflon Seal Only	470-02-070-310 470-02-082-310	1 1	
9	Seal Seat Retainer Oring	Buna #031	360-00-500-120	1	
10	Mechanical Seal Ass'y	3/4 XP901P901/X/VP90-1P901 T8 Viton	335-00-100-142	1	
11	Driving Ring	Steel 1/4-20X1/4 Cup Point SS Screw	330-00-050-620 355-00-271-660	1 2	
12	Casing Bushing	Bronze Carbon	175-02-075-050 2-095-011-880-02	1 1	
13	Casing	Iron	190-02-225-310	1	
14	Casing and Bushing Ass'y	Iron / Bronze Iron / Carbon	Consult Factory Consult Factory	1 1	
15	Pipe Plug	1/8 NPT Hex Head Plug	390-00-050-605	1	
16	Grease Fitting	1/4-28 Staight Grease Fitting	325-00-075-605	1	
17	Rotor and Shaft Ass'y	Ductalloy/Steel	455-03-150-139	1	
18	Idler	Iron	2-418-008-352-40	1	
19	Idler Bushing	Tungsten	2-095-023-765-02	1	
20	Idler and Bushing ass'y	Iron/Tungsten	285-03-080-357	1	
21	Head Gasket	.015 Gasket	245-00-046-240	2	
22	Idler Pin	Tungsten	2-433-011-765-00	1	
23	Head	Iron - Plain Iron - Relief Valve	2-370-001-100-00 265-02-060-310	1 1	
24	Head and Idler Pin Ass'y	Plain Head - CI/Tung - Solid Relief Valve Head - CI/Tung - Solid	270-03-050-375 270-03-060-357	1 1	
25	Head Bolts	5/16-18X3/4 Hex Cap Screw GR5	355-00-035-670	5	
*	1-500 Series Bushing (NOT SHOWN)	Bronze Casing Sleeve	175-12-050-110	1	
*	Grease Fitting (NOT SHOWN)	1/8" 15-25 PSI Grease Rel Fitting	325-00-125-605	1	
*	Male Connector (NOT SHOWN)	1/8NPTX1/4 Tube Male Connector	385-00-080-030	2	
*	Tubing (NOT SHOWN)	1/4 Steel Tubing	385-00-150-605	12 in.	
*	Lip Seals (NOT SHOWN)	H,HX4 115SD Lip Seals CR7410	195-00-075-120	1	