

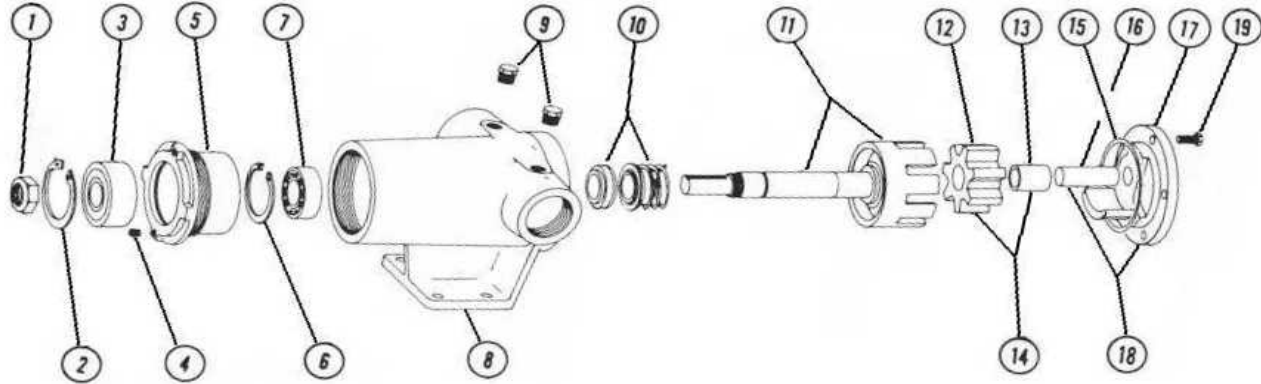
VICAN HEAVY DUTY UNMOUNTED PUMP

BULLETIN: EVD-GG190S-C
 PAGE: 1
 EFFECTIVE: A. 25/08/2004

MODEL GG-190

Subject to change without notice
 F.O.B. Factory

Supercedes all previous parts lists



ITEM	DESCRIPTION	MATERIAL	PART NUMBER	QTY	PRICE
1	Locknut	5/8-18 Nylon Insert Locknut	355-00-604-660	1	
2	Bearing Housing Snap Ring	Steel - Internal	430-00-050-605	1	
3	Outer Ball Bearing	Steel - 5203RS	150-00-100-605	1	
4	Set Screw	#10-32x5/16 cup point set screw	355-00-263-660	2	
5	Bearing Housing	Iron	140-02-045-310	1	
6	Casing Snap Ring	Steel - Internal	430-00-075-605	1	
7	Inner Ball Bearing	Steel - 1638SC	150-00-075-605	1	
8	Casing	Iron	2-180-200-100-00	1	
		Iron - Teflon Seal Only	190-02-171-310	1	
9	Pipe Plug	1/4-18 Hex Head Pipe Plug	390-00-125-605	2	
10	Mechanical Seal Ass'y	Buna / Carbon vs Ceramic / SS - BF1C1	335-00-060-242	1	
		Viton / Carbon vs Ceramic / SS - XP1C1	335-00-060-249	1	
		Teflon / Carbon vs Ni-Resist / SS - QP171	335-00-070-217	1	
11	Rotor and Shaft Ass'y	Ductalloy / Steel	455-03-070-139	1	
12	Idler Gear	Iron	2-417-201-353-40	1	
13	Idler Bushing	Carbon	2-091-004-880-02	1	
14	Idler and Bushing ass'y	Iron / Carbon	285-03-060-332	1	
15	Head Oring	#144 Buna	360-00-020-120	1	
16	Idler Pin	Steel - Non greasable	295-00-030-690	1	
17	Head	Iron - Plain	2-365-201-100-00	1	
		Iron - Relieve Valve	265-02-040-310	1	
18	Head and Idler Pin Ass'y	Iron / Steel - Plain / Non greasable	270-03-030-350	1	
		Iron / Steel - Relieve Valve / Non greasable	270-03-040-350	1	
19	Head Fasteners	Plain Head	1/4-20x3/4 Hex Head Screw Grade 5	6	
		Relieve Valve	1/4-20x5/8 Socket Head Cap Screw	6	