

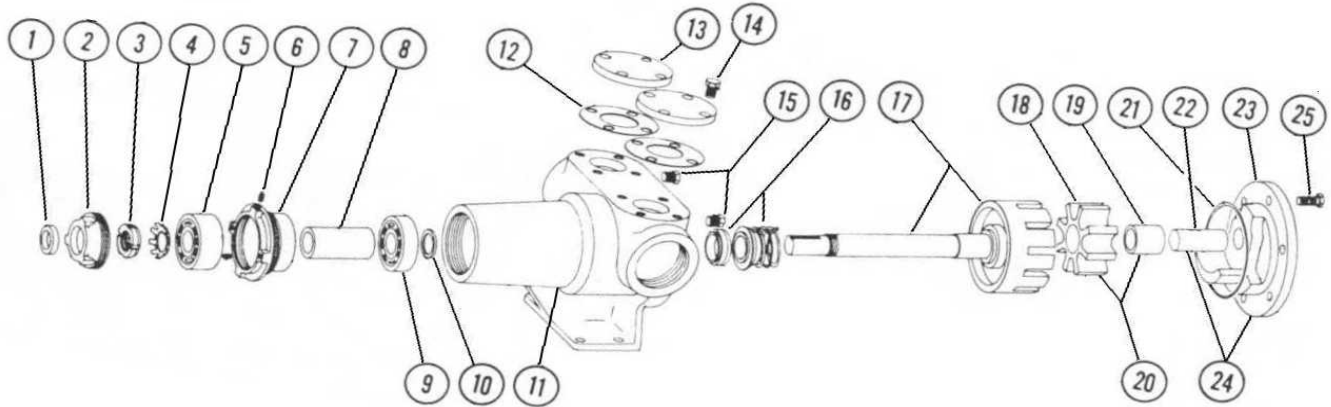
VICAN HEAVY DUTY UNMOUNTED PUMP

BULLETIN: EVD-AS190S-C
 PAGE: 1
 EFFECTIVE: A. 25/08/2004

MODEL AS-190

Subject to change without notice
 F.O.B. Factory

Supercedes all previous parts lists



ITEM	DESCRIPTION	MATERIAL	PART NUMBER	QTY	PRICE
1	Lip Seal	Buna	195-00-100-120	1	
2	Bearing Cap	Iron	100-02-050-310	1	
3	Locknut	Locknut N06	355-00-556-605	1	
4	Lockwasher	Lockwasher W06	355-00-548-605	1	
5	Outer Ball Bearing	Steel - 5306SC3	150-00-225-605	1	
6	Set Screws	Cap to housing	1/4-28x5/16 Cone Point Set Screw	355-00-280-660	2
		Housing to Casing	1/4-25x1/2 Cup Point Set Screw	355-00-283-660	2
		Casing to Housing	1/4-28x5/16 Cone Point Set Screw	355-00-280-660	2
7	Bearing Housing	Iron	140-02-100-310	1	
8	Bearing Spacer	Steel	490-00-050-605	1	
9	Inner Ball Bearing	Steel - 6306-2RS	150-00-200-605	1	
10	Retaining Washer	Steel	430-00-150-605	1	
11	Casing	Iron	190-00-350-310	1	
12	Relief Valve Port Gasket	Standard	245-00-230-240	2	
13	Blanking Plate	Steel	160-02-075-310	2	
14	Relief Valve Fasteners	3/8-16x3/4 Hex Cap Screw Grade 5	355-00-056-670	8	
15	Pipe Plugs	1/8 NPT Hex Head	390-00-050-605	2	
16	Mechanical Seal Assembly	Buna / Carbon vs Ni-Resist / STL - BF871	335-00-140-045	1	
		Buna / Carbon vs Ceramic / SS - BF1C1	335-00-140-040	1	
		Viton / Carbon vs Ceramic / SS - XP1C1	335-00-140-050	1	
		Teflon / Carbon vs Ni-Resist / SS - QP171	335-00-140-217	1	
17	Rotor and Shaft Assembly	Ductalloy / Steel	455-03-300-139	1	
18	Idler Gear	Ductile	280-02-140-210	1	
19	Idler Bushing	Carbon	175-02-100-140	1	
20	Idler and Bushing Assembly	Ductile/Carbon	285-03-140-122	1	
21	Head Oring	#237 Buna	360-00-060-120	1	
22	Idler Pin	Steel - Non greasable	295-00-110-690	1	
23	Head	Iron - Plain	265-02-170-310	1	
24	Head and Pin Assembly	Iron / Steel - Plain / Non greasable	270-03-170-350	1	
25	Head Fasteners	7/16-14x1 Hex Cap Screw Grade 5	355-00-085-670	6	